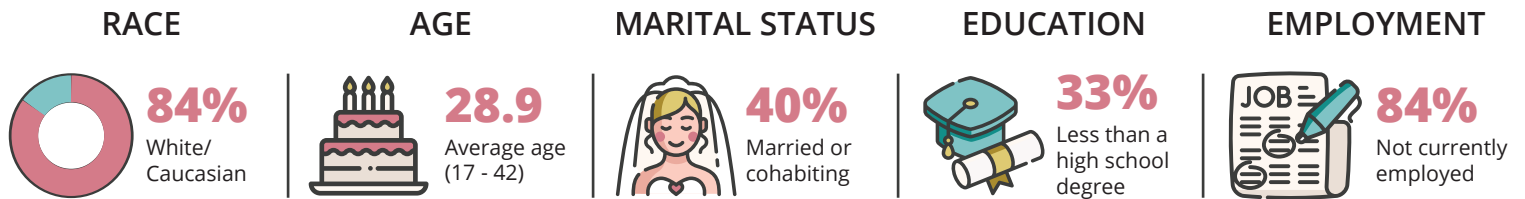


# The Women of the KY-Moms MATR Program

## A Snapshot of Respondents at Baseline

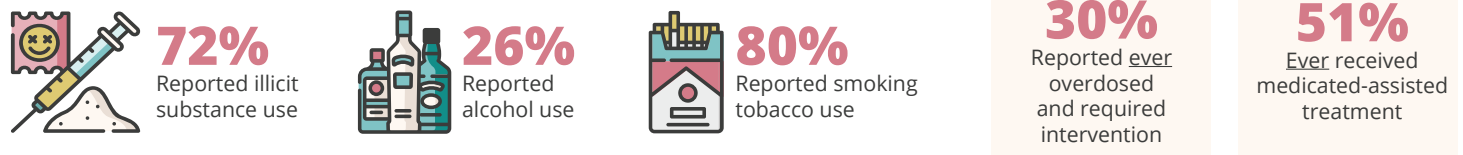
The KY-Moms MATR case management program is administered by the Division of Substance Use Disorder in the Department for Behavioral Health, Developmental and Intellectual Disabilities; KY-Moms MATR (502) 782-6192

This fact sheet summarizes characteristics reported by 43 pregnant women in the KY-Moms MATR program who completed an updated baseline assessment between February 2024 and June 2024.

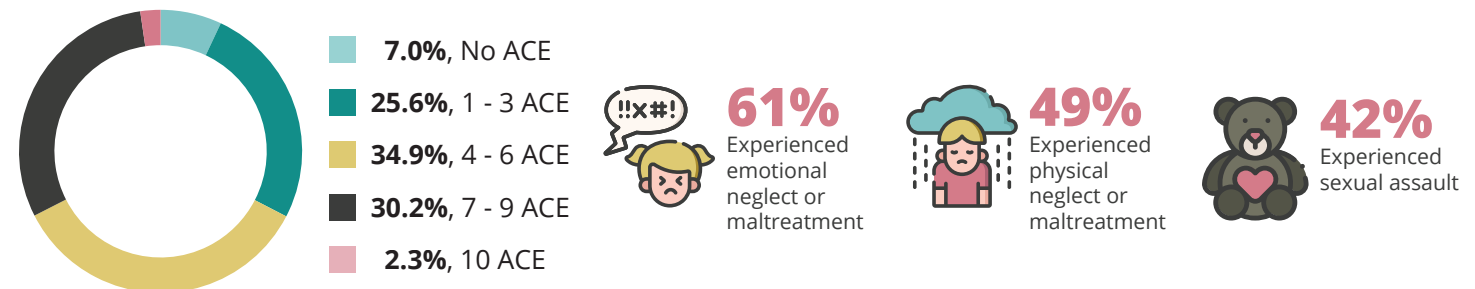


### Risk Factors at Baseline

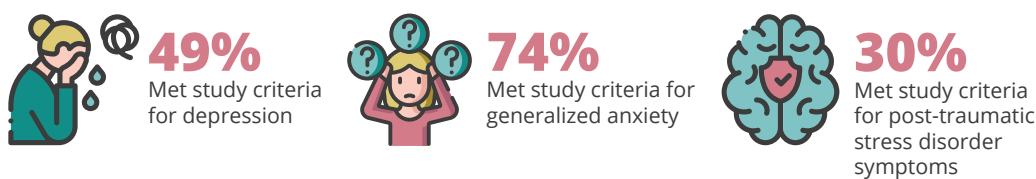
#### SUBSTANCE USE 6 MONTHS BEFORE ENTERING PROGRAM



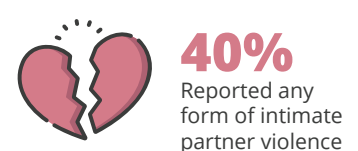
#### ADVERSE CHILDHOOD EXPERIENCES (ACE)



#### MENTAL HEALTH 6 MONTHS BEFORE PREGNANCY



#### INTIMATE PARTNER VIOLENCE 6 MONTHS BEFORE PREGNANCY



### KY-Moms MATR Service Needs

